

C2 Jan 2006

1i)  $a = -28$   $d = 2$  ii) Show

2i)  $34.5 \text{ cm}^2$  ii)  $11.2 \text{ cm}$  iii)  $61.9^\circ$

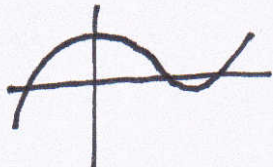
3i)  $1 - 24x + 264x^2$  ii) 192

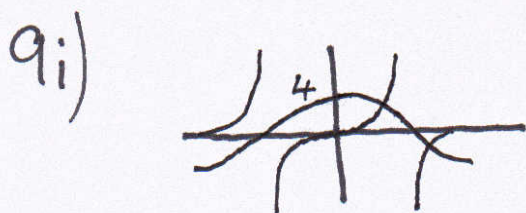
4i)  $73 \text{ cm}$  ii)  $157.5 \text{ cm}^2$

5i) show ii)  $n$  is 119

6a)  $\frac{2}{3}x^{\frac{3}{2}} + 4x + c$  bi)  $4 - \frac{4}{a}$  ii) 4

7ia)  $\log x - \log y$  b)  $1 + 2\log x + \log y$  ii)  $y \approx 0.215$

8i) show ii) 9 iii)  some area below x axis



ii) intersections  $\beta = 180 - \alpha$

iii)  $56^\circ$