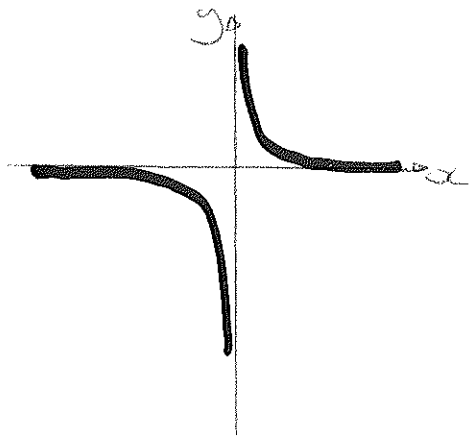


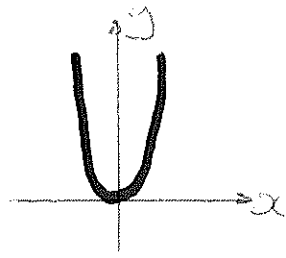
C1 June 2007

1) $3x^2 + 26x + 16$

2i)



ii)



b) stretch s.f. 8 \uparrow
stretch^{or} s.f. $\frac{1}{2}$ \rightarrow

3i) $6\sqrt{5}$

ii) $15\sqrt{5}$

4i) $16 - 4k^2$

ii) ± 2

5i) Show

ii) 50

6) $x = -1, x = -3$

7a) $1 - 3x^{-2}$

b) 20

8i) $(x+4)^2 - 1$

ii) $(-4, -1)$

iii) $x < -5, x > -3$

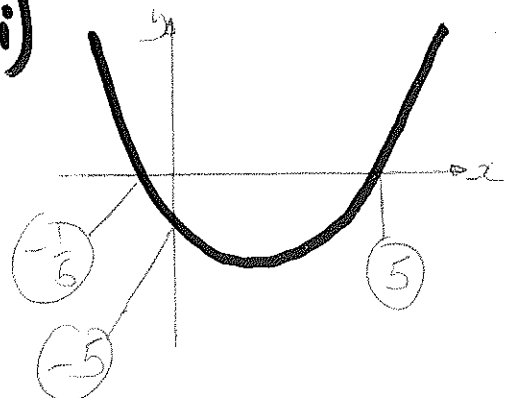
9i) $k = 7$

ii) $4\sqrt{2}$

iii) $y = x + 1$

10i) $x = -\frac{1}{5}, x = 5$

ii)



iii) $c = -32$