

Please write clearly in block capitals.

Centre number

--	--	--	--	--

Candidate number

--	--	--	--

Surname

Forename(s)

Worked Solutions

Candidate signature

GCSE MATHEMATICS

H

Higher Tier

Paper 1 Non-Calculator

Thursday 24 May 2018

Morning

Time allowed: 1 hour 30 minutes

Materials

For this paper you must have:

- mathematical instruments

You must **not** use a calculator.



Instructions

- Use black ink or black ball-point pen. Draw diagrams in pencil.
- Fill in the boxes at the top of this page.
- Answer **all** questions.
- You must answer the questions in the spaces provided. Do not write outside the box around each page or on blank pages.
- Do all rough work in this book. Cross through any work you do not want to be marked.

Information

- The marks for questions are shown in brackets.
- The maximum mark for this paper is 80.
- You may ask for more answer paper, graph paper and tracing paper. These must be tagged securely to this answer book.

Advice

- In all calculations, show clearly how you work out your answer.

For Examiner's Use

Pages	Mark
2-3	
4-5	
6-7	
8-9	
10-11	
12-13	
14-15	
16-17	
18-19	
20-21	
22-23	
24-25	
26-27	
TOTAL	



JUN1883001H01

Answer **all** questions in the spaces provided1 Work out $\sqrt[3]{64 \times 1000}$

Circle your answer.

 4×10

[1 mark]

 40

80

400

4000

2 The vector $\begin{pmatrix} -2 \\ 3 \end{pmatrix}$ translates A to B.

Circle the vector that translates B to A.

[1 mark]

 $\begin{pmatrix} -2 \\ 3 \end{pmatrix}$ $\begin{pmatrix} -3 \\ 2 \end{pmatrix}$ $\begin{pmatrix} 3 \\ -2 \end{pmatrix}$ $\begin{pmatrix} 2 \\ -3 \end{pmatrix}$

3 Circle the expression that is equivalent to

 $3a - a \times 4a + 2a$

[1 mark]

 $8a^2 + 2a$ $12a^2$ $5a - 4a^2$ $3a - 6a^2$ 

- 4 Circle the number that is closest in value to

$$\frac{9.8}{0.0195}$$

$$\frac{10}{0.02} = \frac{1000}{2} = 500$$

[1 mark]

5

50

500

5000

- 5 Solve $5(x + 3) < 60$

[2 marks]

$$5x + 15 < 60$$

$$5x < 45$$

$$x < 9$$

Answer _____

Turn over for the next question

Do not write
outside the
box

Turn over ►



6

The height of Zak is 1.86 metres.

The height of Fred is 1.6 metres.

Write the height of Zak as a fraction of the height of Fred.

Give your answer in its simplest form.

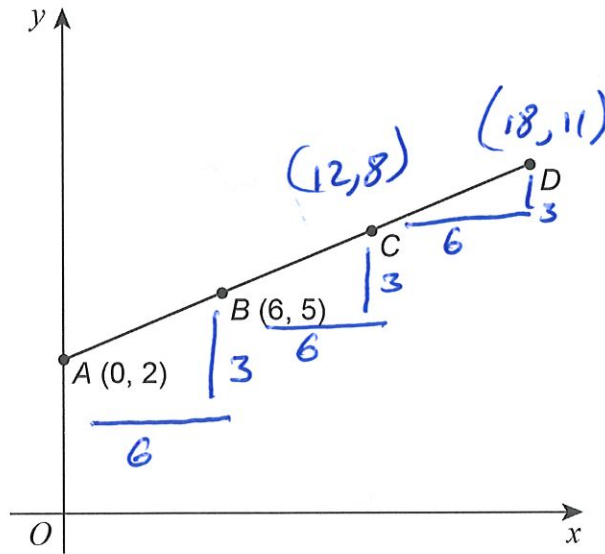
[3 marks]

$$\frac{1.86}{1.6} = \frac{186}{160} = 1 \frac{26}{160} = 1 \frac{13}{80}$$

Answer _____



- 7 $A(0, 2)$ and $B(6, 5)$ are points on the straight line $ABCD$.



Not drawn
accurately

$$AB = BC = CD$$

Work out the coordinates of D .

[3 marks]

Answer (18 , 11)

Turn over for the next question



- 8 A coin is thrown 50 times.
It lands on heads 31 times.

- 8 (a) Write down the relative frequency it lands on heads.

[1 mark]

Answer

$$31/50$$

- 8 (b) Raj says,

“The coin is biased towards heads.”

Use the data to give a reason why he might be correct.

[1 mark]

You would expect $25/50$, so as higher
than this might be bias to heads



9 The range of a set of numbers is $15\frac{1}{4}$

The smallest number is $-2\frac{7}{8}$

Work out the largest number.

[3 marks]

$$15\frac{1}{4} - 2\frac{7}{8}$$

$$14\frac{10}{8} - 2\frac{7}{8} = 12\frac{3}{8}$$

Answer _____

10 y is inversely proportional to x .

Complete the table.

[2 marks]

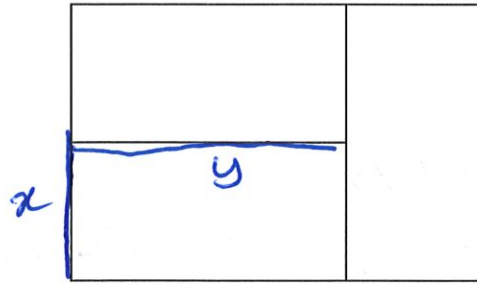
x	12	6	3
y	2	4	8

Turn over for the next question



11

A large rectangle is made by joining three identical small rectangles as shown.



Not drawn
accurately

The perimeter of one small rectangle is 15 cm

Work out the perimeter of the large rectangle.

[4 marks]

Perimeter small $2x + 2y = 15$

large $4x + 3y$

but $y = 2x$

so $2x + 2 \times 2x = 15 \Rightarrow 6x = 15 \quad x = \frac{5}{2}$

$y = 2 \times \frac{5}{2} = 5$

$4 \times \frac{5}{2} + 3 \times 5 = \underline{\underline{25}}$

Answer _____ cm



- 12 Put these numbers in order from smallest to largest.

$$8 \times 10^{-4} \quad 4 \times 10^{-2} \quad 6 \times 10^{-4} \quad 0.07$$

0.0008 0.04 0.0006

[2 marks]

0.0006, 0.0008, 0.04, 0.07

Smallest 0.0006

0.0008

0.04

Largest 0.07

- 13 Circle the volume that is the same as 15 cm^3

[1 mark]

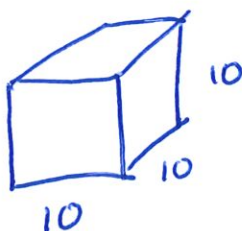
15 000 mm^3

1.5 mm^3

0.0015 mm^3

150 mm^3

Turn over for the next question



$$1 \text{ cm}^3 = 1000 \text{ mm}^3$$

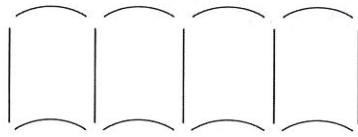
Turn over ►



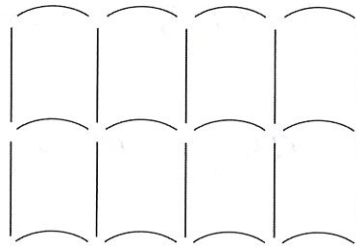
14 Patterns are made using straight lines and arcs.

14 (a)

Pattern A (one row)



Pattern B (two rows)



More rows are added to **Pattern B** so that

$$\text{number of straight lines} : \text{number of arcs} = 10 : 9$$

How many rows are added?

[2 marks]

	5	8	
+5		+4	
10	12	①	
15	16	②	
20	20	③	
25	24	④	
30	28	⑤	
35	32	⑥	
40	36	⑦	

$$10 : 4$$

do 6 more to B

Answer 6



14 (b) A different pattern is made using 20 straight lines and 16 arcs.

The straight lines and arcs are made from metal.

20 straight lines cost £12

cost of one straight line : cost of one arc = 2 : 3

Work out the **total** cost of the metal in the pattern.

[3 marks]

$2 : 3$	20	30	$\text{is } \pounds 18$
$20 : 30$	1	$\pounds 0.6$	
$\pounds 12 = \pounds 18$	16	$\pounds 6 + \pounds 3.6$	
		$\pounds 9.60$	

Answer £ 9.60

Turn over for the next question



15

A biased dice is thrown.

Here are the probabilities of each score.

Score	1	2	3	4	5	6
Probability	0.25	0.05	0.15	0.05	0.3	0.2

The dice is thrown 200 times.

Work out the expected number of times the score will be odd.

[3 marks]

$$200 \times (0.25 + 0.15 + 0.3)$$

$$200 \times 0.7 = 140$$

Answer _____



16 The value of y is 20% more than the value of x .

Circle the ratio

$x : y$

1:1.2
5:6

[1 mark]

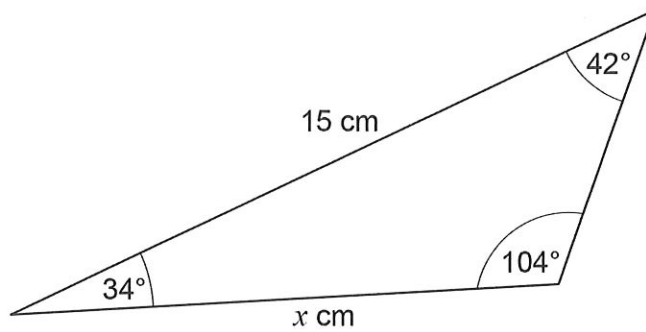
5 : 6

6 : 5

4 : 5

5 : 4

17 Here is a triangle.



Not drawn
accurately

Circle the correct equation.

[1 mark]

$$\frac{\sin x}{42} = \frac{\sin 15^\circ}{104}$$

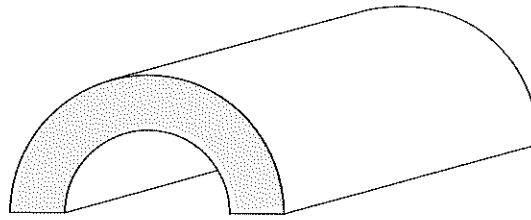
$$\frac{x}{\sin 42^\circ} = \frac{15}{\sin 104^\circ}$$

$$\frac{\sin x}{34} = \frac{\sin 15^\circ}{104}$$

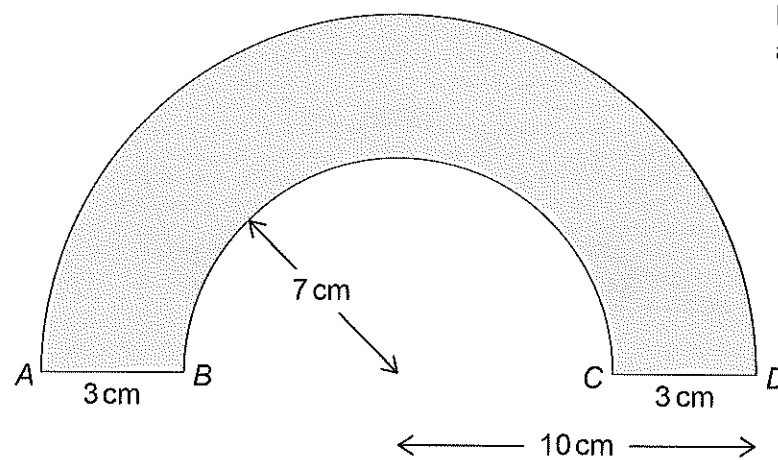
$$\frac{x}{\sin 42^\circ} = \frac{15}{\sin 34^\circ}$$



- 18 Here is a tunnel for a toy train.



The diagram below shows the cross section of the tunnel.



Not drawn
accurately

AD is a semicircular arc of radius 10 cm
 BC is a semicircular arc of radius 7 cm
 The length of the tunnel is 30 cm

Work out the total area of all **six** faces of the tunnel.

Give your answer in terms of π .

[5 marks]



$$\left(\frac{\pi \times 10^2}{2} - \frac{\pi \times 7^2}{2} \right) 2 = 51\pi$$

$$\frac{20\pi}{2} \times 30 = 300\pi$$

$$\frac{14\pi}{2} \times 30 = 210\pi$$

$$3 \times 30 \times 2 = 180$$

$$\underline{561\pi + 180}$$

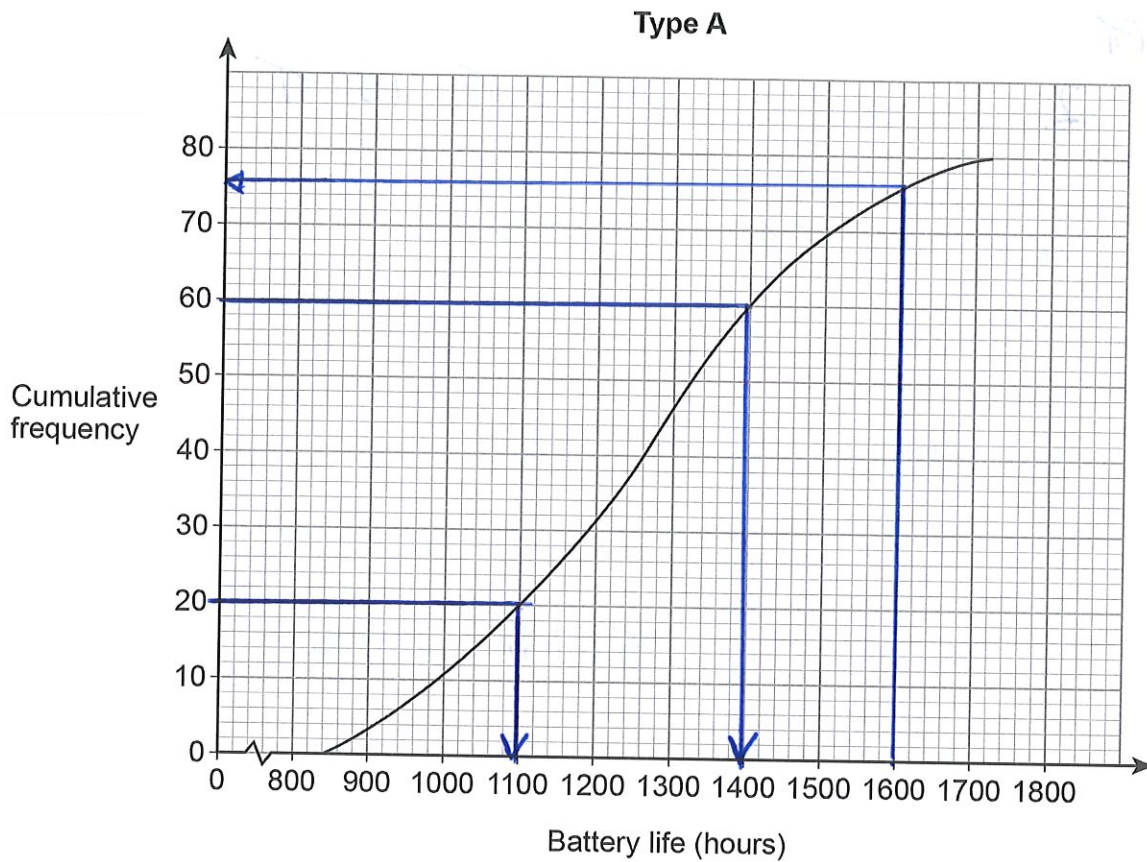
Answer _____ cm²



19

Type A batteries and type B batteries were tested.

The cumulative frequency diagram shows information about the battery life of type A.



19 (a) Estimate the interquartile range for type A.

[2 marks]

$$1400 - 1100 = 300$$

Answer _____ hours



19 (b) Estimate the number of type A batteries that had a battery life of more than 1600 hours.

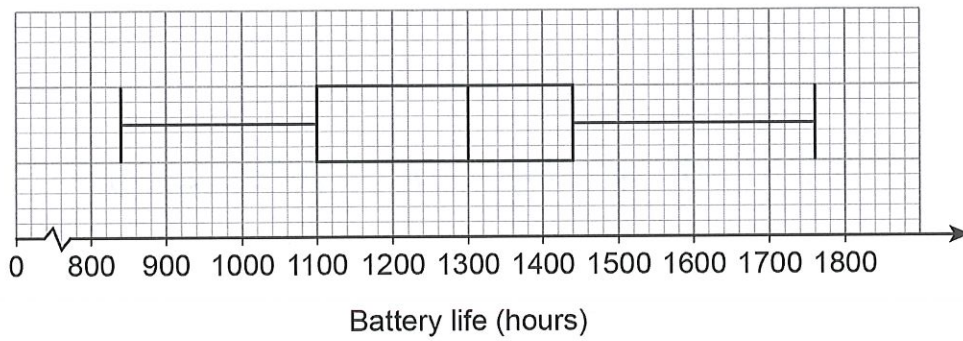
[1 mark]

$$80 - 76 = 4$$

Answer _____

19 (c) The box plot shows information about the battery life of type B.

Type B



On average, which type had the greater battery life?

Tick a box.

type A

type B

Using data from **both** diagrams, state how you chose your answer.

[2 marks]

Median of A 1400
 " " B 1300



20

A linear sequence starts

$a + 2b$

$a + 6b$

$a + 10b$

$a + 14b$

$a + 18b$

8

44

The 2nd term has value 8

The 5th term has value 44

Work out the values of a and b .

[4 marks]

$$44 = a + 18b$$

$$- \quad 8 = a + 6b$$

$$36 = 12b$$

$$b = 3$$

$$8 = a + 18 \Rightarrow a = -10$$

$a = \underline{\quad -10 \quad}$

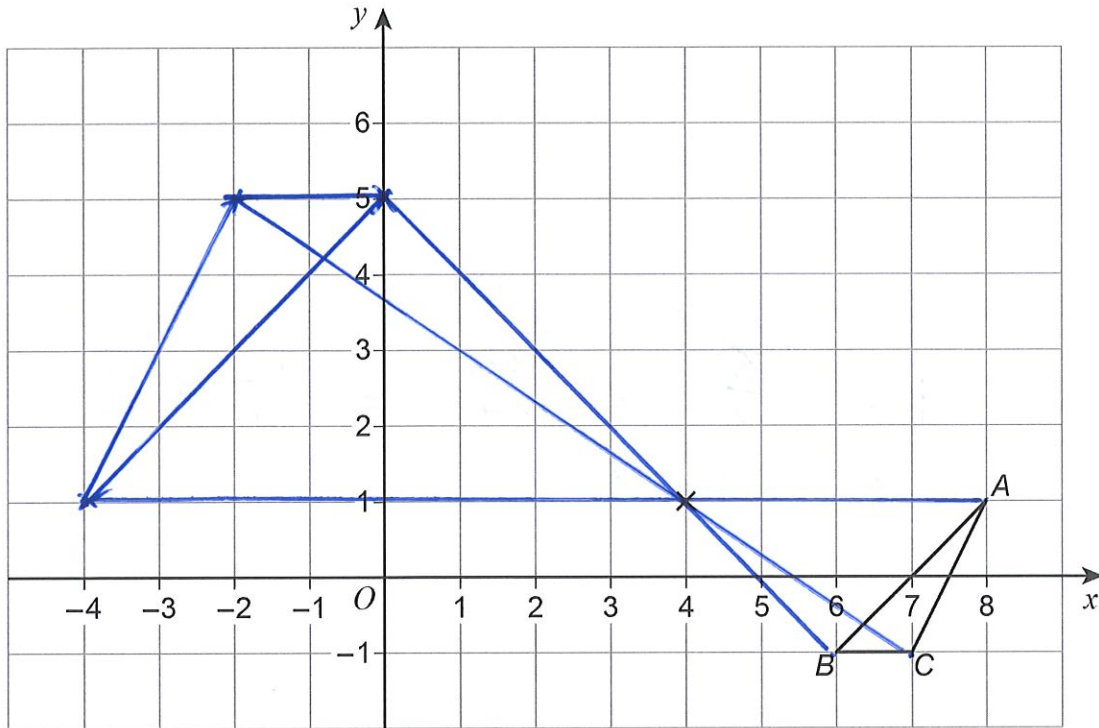
$b = \underline{\quad 3 \quad}$



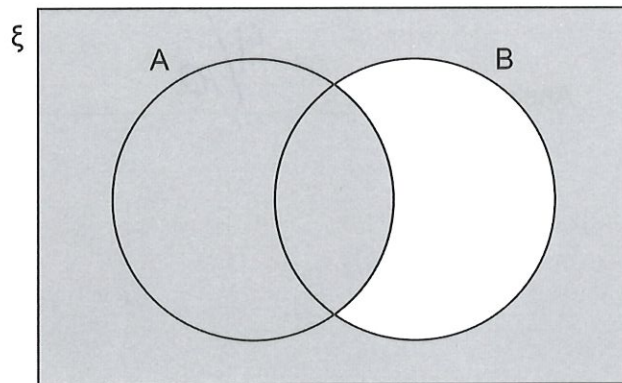
21

Enlarge triangle ABC by scale factor -2 , centre $(4, 1)$

[2 marks]



22



Which of these represents the shaded region?

Circle your answer.

[1 mark]

$A \cap B'$

B'

$A \cup B'$

$A' \cup B'$

$\frac{\quad}{7}$

Turn over ►



23

A shopkeeper compares the income from sales of a laptop in March and April.

April

Price	$\frac{1}{5}$ more than March
Number sold	$\frac{1}{4}$ less than March

By what fraction does the income from these sales decrease in April?

[3 marks]

$$1 \times \frac{6}{5} \times \frac{3}{4} = \frac{18}{20} = \frac{9}{10}$$

$$1 \times 1.2 \times 0.75$$

Answer _____

$\frac{9}{10}$



24 (a) Work out the value of $2^{14} \div (2^9)^2$

Give your answer as a fraction in its simplest form.

[3 marks]

$$2^{14-18} = 2^{-4} = \frac{1}{2^4}$$

$$= \frac{1}{16}$$

Answer

$\frac{1}{16}$

24 (b) Work out the value of $25^{\frac{3}{2}}$

[2 marks]

$$5^3 = 125$$

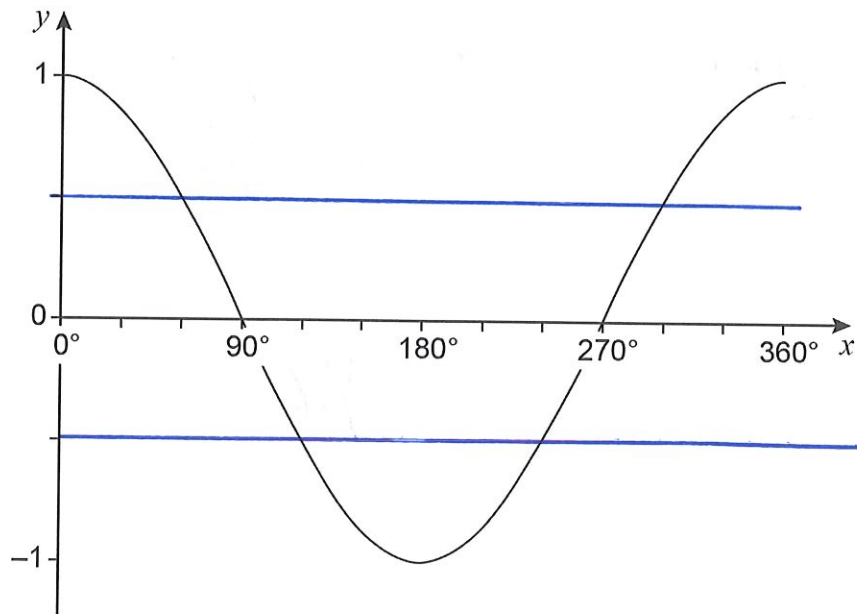
Answer

125

Turn over for the next question



25

Here is a sketch of the graph of $y = \cos x$ for values of x from 0° to 360° 

$$\cos 60 = \frac{1}{2}$$

25 (a) $\cos x = \cos 60^\circ$

Work out the value of x when $90^\circ \leq x \leq 360^\circ$

[1 mark]

Answer 300 degrees

25 (b) $\cos x = -\cos 60^\circ$

Work out the value of x when $180^\circ \leq x \leq 360^\circ$

[1 mark]

Answer 240 degrees



26

 b is two thirds of c .

$$5a = 4c$$

Work out the ratio $a : b : c$ Give your answer in its simplest form where a , b and c are integers.

[3 marks]

$$5a = 4c \text{ means } \begin{array}{cc} a & c \\ 4 & 5 \end{array}$$

$$b = \frac{2}{3}c \Rightarrow 3b = 2c \text{ means } \begin{array}{cc} b & c \\ 2 & 3 \end{array}$$

So need common denominator

$$\begin{array}{ccc} a & c & b \end{array}$$

$$12 : 15 : 10$$

Answer 12 : 10 : 15

Turn over for the next question



27 (a) Jo wants to work out the solutions of $x^2 + 3x - 5 = 0$

She says,

"The solutions **cannot** be worked out because $x^2 + 3x - 5$ does **not** factorise to $(x + a)(x + b)$ where a and b are integers."

Is Jo correct?

Tick a box.

Yes

No

Give a reason for your answer.

[1 mark]

You could have a and b as fractions.

27 (b) Without expanding any brackets,

show how to work out the **exact** solutions of $9(x + 3)^2 = 4$

Give the solutions.

[3 marks]

$$(x+3)^2 = 4/9$$

$$x+3 = \pm\sqrt{4/9} = \pm 2/3$$

$$x = -3 \pm 2/3$$

$$x = -3\frac{2}{3} \text{ or } -2\frac{2}{3}$$



28

Simplify $\sqrt{80} + \sqrt{2\frac{2}{9}}$ Give your answer in the form $\frac{a\sqrt{5}}{b}$ where a and b are integers.

[3 marks]

$$\sqrt{16 \times 5} + \sqrt{\frac{20}{9}} = 4\sqrt{5} + \frac{2\sqrt{5}}{3} = \frac{12\sqrt{5}}{3} + \frac{2\sqrt{5}}{3}$$

$$= \frac{14\sqrt{5}}{3}$$

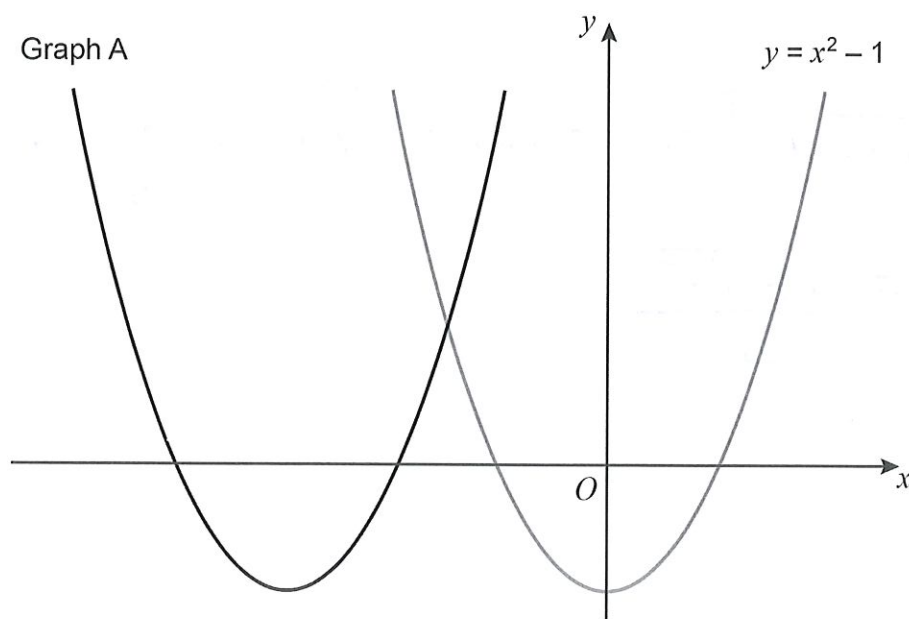
Answer _____

Turn over for the next question



29

Here are sketches of two graphs.



The graph of $y = x^2 - 1$ is translated 3 units to the left to give graph A.

29 (a) The equation of graph A can be written in the form $y = x^2 + bx + c$

Work out the values of b and c .

[3 marks]

$$y = (x + 3)^2 - 1$$

$$y = x^2 + 6x + 9 - 1$$

$$y = x^2 + 6x + 8$$

$$b = \underline{\quad 6 \quad}$$

$$c = \underline{\quad 8 \quad}$$



- 29 (b) The graph of $y = x^2 - 1$ is reflected in the x -axis to give graph B.

Work out the equation of graph B.

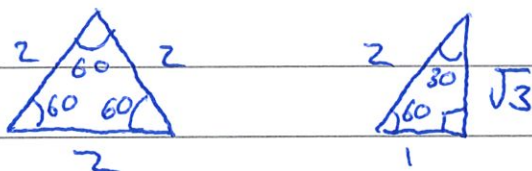
[1 mark]

$$-y = x^2 - 1 \quad \text{or} \quad y = -x^2 + 1$$

Answer _____

- 30 Show that the value of $\cos 30^\circ \times \tan 60^\circ + \sin 30^\circ$ is an integer.

[3 marks]



$$\cos 30^\circ \times \tan 60^\circ + \sin 30^\circ$$

$$\frac{\sqrt{3}}{2} \times \frac{\sqrt{3}}{1} + \frac{1}{2} = \frac{3}{2} + \frac{1}{2} = \frac{4}{2} = 2$$

END OF QUESTIONS



There are no questions printed on this page

*Do not write
outside the
box*

**DO NOT WRITE ON THIS PAGE
ANSWER IN THE SPACES PROVIDED**

Copyright information

For confidentiality purposes, from the November 2015 examination series, acknowledgements of third party copyright material will be published in a separate booklet rather than including them on the examination paper or support materials. This booklet is published after each examination series and is available for free download from www.aqa.org.uk after the live examination series.

Permission to reproduce all copyright material has been applied for. In some cases, efforts to contact copyright-holders may have been unsuccessful and AQA will be happy to rectify any omissions of acknowledgements. If you have any queries please contact the Copyright Team, AQA, Stag Hill House, Guildford, GU2 7XJ.

Copyright © 2018 AQA and its licensors. All rights reserved.

